

Success Story

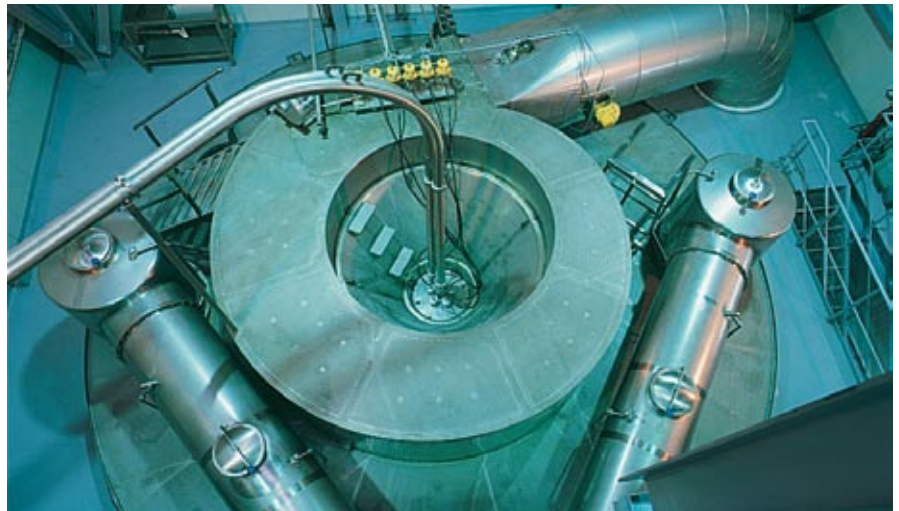
Krüger GmbH & Co. KG, Bergisch Gladbach

«The use of one card for time recording, access control and canteen data offers advantages for the employees, simplifies administration and provides security for the company.»

«The conditions that were determined at the start of the project are being implemented in their entirety by our current system.»

Ernst Albert Uhlemann
Head of IT Infrastructure

www.krueger.de
www.gfos.de



Time + access at Krüger Cappuccino

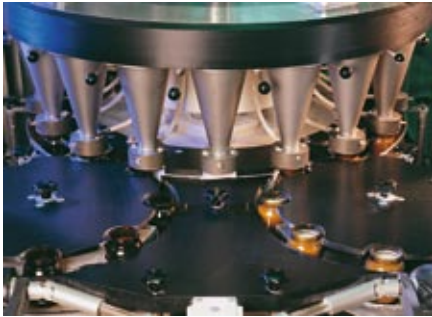
Who hasn't seen the advertising spot Krüger für Krüger - Es geht auch Krüger! («Krüger for Krüger - Krüger also goes!»)

The name Krüger, however, not only stands for the cappuccino that is so well-known from the advertising, but also for branded products such as Schogetten and Fritt. With the instantization of lemon tea in 1971, Wilibert Krüger discovered the market niche of instant products. This was the foundation stone for the rapid growth of an SME to become the Krüger group. With more than 4,000 employees in 19 production sites and sales companies in 14 countries, Krüger is one of the leading companies in its sector. Further growth is on the cards, with a constantly growing turnover, which came to EUR 1,159 million in 2001.

System sought that grows with the company

At Krüger, they opted at an early age for a convenient use of a digital time recording system. However, the existing system had already reached its limits in the mid-90s due to the rapid growth of the company. A system enhancement was unavoidable. The new software solution was to be designed in such a way that it would take into account future growth of the corporate group. The requirements included that in addition to the pure time & attendance, there were also to be options of requirements-oriented connection of other components such as access control and personnel deployment planning. In addition, a rapid preparation of the booked data in the payroll system of SAP, which already existed, was to be ensured.

Success Story



The access control was already to be implemented in the system changeover at the entry points that are not permanently occupied by a gatesman. In addition, certain areas, such as the warehouse were to be subject to access restricted only to previously defined employees.

After various product presentations by the most important suppliers, Krüger opted for the software solution from GFOS mbH in Essen. «We were shown the perspective of being able to expand X/TIME in such a way that an almost completely automatic accounting system is available. In addition, we saw the possibility of implementing all the requirements that might occur in future in the system», says Hans-Jürgen Remmele, HR department.

The software also precisely fulfils the requirements that were defined previously. A parametrizable standard software that can be adapted to company-specific requirements. The modular design offers the opportunity of connecting the various models as required. The system can be expanded to form a MES system via SFDC, QM and LVS.

Modular solution in use

The implementation of the project was done in close collaboration between employees of Krüger and consultants of

the company GFOS. Just under a year was planned for the project phase from the conceptual planning to installation; the initial installation was done at the end of the 90s.

The time recording of the company's own employees and of third-party companies is processed by the software and determined by inductive card. The time management data recorded are forward via an interface to the payroll component of SAP for processing. Only minor company-specific modifications had to be carried out to meet the previously defined requirements of the Krüger Group. Kaba Benzing terminals of the Bedanet series are used for both access control and for the time recording. In total, well over 50 devices are in use. There are, for instance, access control terminals of the type Bedanet 9120 at the entrances; unauthorized access prohibited. It was also determined that employees are only able to enter the premises at certain times and that access on special days such as e.g. public holidays is not permitted. «The access to the various IT server rooms is also controlled with the system. The use of a card for time recording, access control and canteen data offers advantages for the employees, makes the administration easier and provides security for the company», says Ernst-Albert Uhlemann, head of IT infrastructure.

The badge creation of the cards is done at Krüger. If the card is lost or in the case of new recruits, new cards are thus available at short notice. The cards are marked with the personnel numbers and a version number. If an employee loses his or her card, no new personnel

number needs to be issued due to the version number. Only the card with the old version number is locked and a card with a sequential version number issued. The shift-based personnel planning and the recording of canteen data are also done via the modular software solution. In both canteens at Krüger, meals are paid for with the card, i.e. the selected meal is recorded by a scanner and the corresponding amount deducted off the next account statement. They opted for recording of canteen data without pre-ordered menus, i.e. the employees can select their meals on the spur of the moment in the canteen. The individual positions are scanned in and added up to one amount. The invoicing of the food consumed is easily done via an interface to the invoicing system.

The Krüger employees were trained in detail by GFOS employees in the module used in their respective departments.

All in all

The system is expanded depending on requirements and adapted to the corresponding company-specific requirements. «The conditions that were determined at the start of the project are being implemented in their entirety by our current system», says Hans-Jürgen Remmele.

