



**KABA®**

Product facts  
Kentaur FGE Full-Height Gates  
Kentaur RBR Road Barriers

## Swing Doors FGE

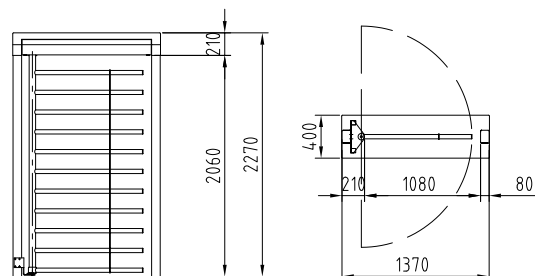
### Basic equipment

#### FGE-M01



<b>Application</b>	passage of persons and material handling	
<b>Construction</b>	portal width	1370
	total height	2270
	total height with optional roof D1	2390
	optional roof D2	2420
	optional roof D3	2420
	passage height	2060
	passage width	1080
	portal and housing	steel
	lockable maintenance openings	aluminium
	rotating wing with column Ø 89 mm	with 11 straight crossbars Ø 40 mm and vertical reinforcement plate made of stainless steel glossy AISI 304
<b>Finish</b>	stainless steel satin finish	
	steel elements hot-dip galvanized	
	aluminium elements in RAL 9006 (white aluminium)	
<b>Function</b>	type 2*	
<b>Electrical components</b>		
		control system integrated in the unit
		power supply 110 - 230 VAC, 50/60 Hz
<b>Installation</b>		
		in sleeve foundation measurement X = 150 mm

\* Type 2 power assisted motion; two servo-positioning drives/ electrically controlled in both directions



## Optional roofs

FGE-M01

### Roof D1 - depth 1500 or 2270 (total height 120)

width

1650

•

### Roof D2 and Roof D3 - depth 2820, 3740 (each with roof edge 200) or 4650 (roof edge 400)

width

1830

•

## Roofing for weather protection and invalid entry prevention

### Roof D1

Steel sub-construction hot-dip galvanized, trapezoidal cover plate in RAL 9002 grey white (optional RAL powder coated). For multiple units we deliver one oversized roof. For four units or more a central water drainage is required. The distance between units is 50 mm.

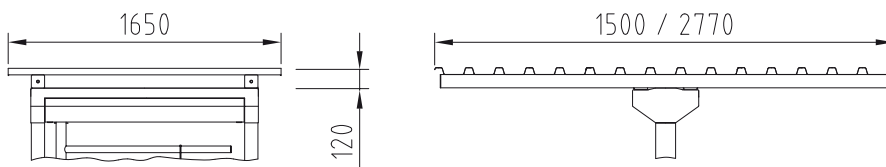
### Roof D2

Steel sub-construction hot-dip galvanized, trapezoidal cover plate in RAL 9002 grey white (optional RAL powder coated). With roof edge silver anodized and water drainage in PVC grey. From depth 3740 on, the unit has to be installed in sleeve foundation and be equipped with reinforced posts. For multiple units we deliver one oversized roof. The distance between units is 50 mm. The fascia is continuous. Its length is max. 6,4 m.

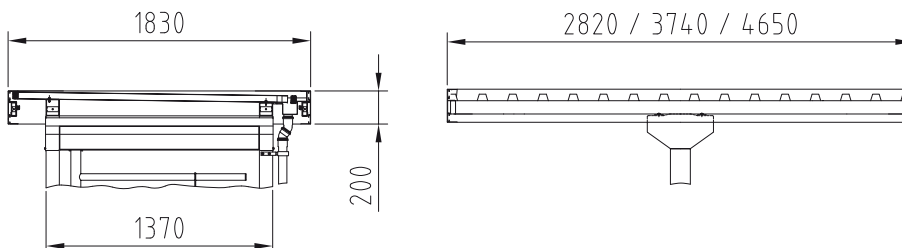
### Roof D3

Steel sub-construction hot-dip galvanized, trapezoidal cover plate in RAL 9002 grey white (optional RAL powder coated). With roof edge silver anodized and water drainage in PVC grey. Roof underneath aluminium panelling in lotus white. From depth 3740 on, the unit has to be installed in sleeve foundation and be equipped with reinforced posts. For multiple units we deliver one oversized roof. The distance between units is 50 mm. The fascia is continuous. Its length is max. 6,4 m.

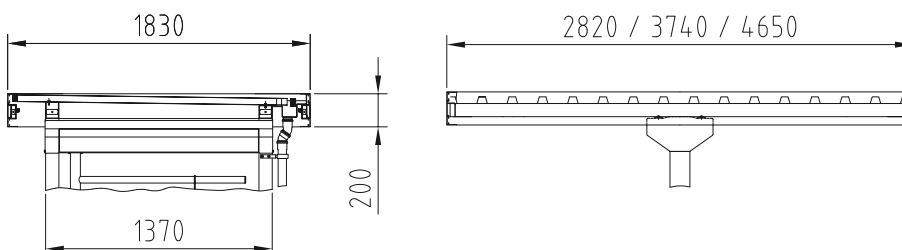
### Roof D1 - with trapezoidal cover plate



### Roof D2 - with trapezoidal cover plate, roof edge profile and water drainage



### Roof D3 - with trapezoidal cover plate, roof edge profile, panelling and water drainage



All dimensions in mm

## Options

### Construction

- for each direction: unlocking by turning lever with profile half cylinder, installed in maintenance opening

### Finish

- steel and aluminium parts additionally finished with powder coating according to RAL

### Electrical components

- power supply plug to supply external nodes, 24 VDC/1A
- installation preparation on plane surface as rectangular cut-out for components provided by customer
- release button for manual single release, integrated in plane surface, for protection against vandalism
- electric key switch for single or permanent release
- operating panels and frame or housing for surface installation
- additional boards to expand the existing in-/outputs
- miscellaneous signal devices
- end wiring distributor to connect a maximum of four OPLs
- various lightings an twilight switch

### Installation

- mounting on finished floor X = 0
- mounting on structural floor X = 150 mm

FGE-MOI

•

•

•

•

•

•

•

•

•

•

•

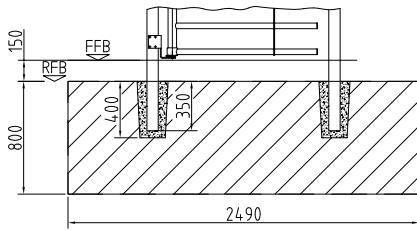
•

**Installation alternatives, for instance FGE-M01**

---

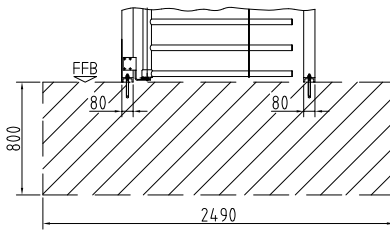
sleeve foundation

---



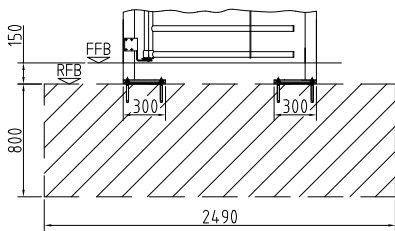
finished floor

---



structural floor

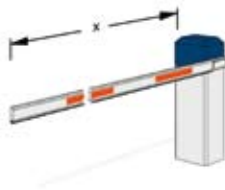
---



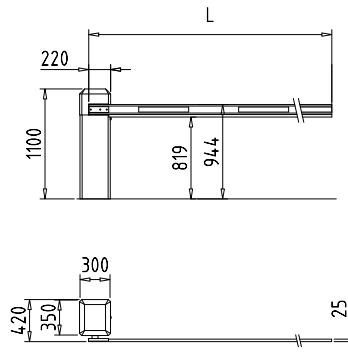
## Road Barriers

### Basic equipment

#### RBR-E01 to -E04



<b>Construction</b>	description	barrier pole length up to 4 m
	total height	1100
	total width	420
	housing, barrier stand	aluminium housing with spare room for devices. Lockable maintenance door and removable cover
barrier pole	barrier pole made of aluminium. Mountable on the right or left hand side of the housing	
barrier pole length	RBR-E01	2,5 m
	RBR-E02	2,5 m
	RBR-E03	3,0 m
	RBR-E04	4,0 m
opening/closing time	RBR-E01	1,4 s
	RBR-E02	0,9 s
	RBR-E03	2,3 s
	RBR-E04	3,2 s
<b>Finish</b>	structured plastic coating	
	housing	RAL 9010 (pure white)
	cover	RAL 5003 (saphir blue)
<b>Function</b>	electromechanical drive with smooth end-positioning of barrier pole by means of sinuous motion	
<b>Electrical components</b>	micro-controller control unit with supervision of running time of motor	
	control system integrated in the unit	
	power supply 230 VAC, 50 Hz	
<b>Installation</b>	dowelled on finished floor level FFL (including mill moulding tool to mark the dowel holes)	



All dimensions in mm

**RBR-E05 to -E07**



barrier pole length up to 8 m

1100

516

aluminium housing with spare room for devices.

Lockable maintenance door and removable cover

barrier pole made of aluminium, mounted in the middle of the housing.

Barrier support or pendulum column required

RBR-E05 5,0 m

RBR-E06 6,0 m

RBR-E07 8,0 m

RBR-E05 4,0 s

RBR-E06 5,5 s

RBR-E07 8,5 s

structured plastic coating

RAL 9010 (pure white)

RAL 5003 (saphir blue)

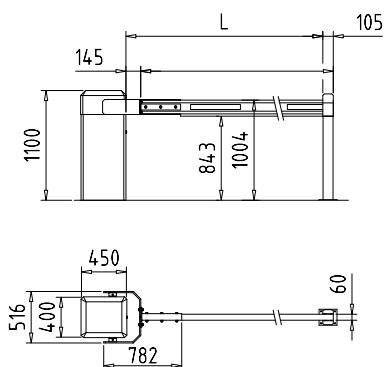
electromechanical drive with smooth end-positioning of barrier pole by means of sinuous motion

micro-controller control unit with supervision of running time of motor

control system integrated in the unit

power supply 230 VAC, 50 Hz

dowelled on finished floor level FFL (including mill moulding tool to mark the dowel holes)



## Options for RBR

	RBR-E01 bis -E04	RBR-E05 bis -E07
<b>Construction</b>		
• barrier support for rectangular or round boom made of aluminium powder coated in RAL 9010 (white)	•	•
• barrier support (height adjustable) with magnet (holding force 2 kN) for boom barrier made of aluminium powder coated in RAL 9010 (white)	•	•
• barrier swing support made of aluminium powder coated in RAL 9010 (white) with spring system for boom barrier (for RBR-E04 to -E07) or with counterbalance	•	•
• heating an timer with week automatic integrated in the housing	•	•
• suspension grid made of aluminium flat section or tube in miscellaneous dimensions affixed to barrier boom		•
• round boom barrier white with red stripes Ø 60 mm or Ø 100 mm	•	•
• fire brigade unlocking device integrated in barrier housing and photo sensor (distance 10 m)	•	•
<b>Function</b>		
• induction loops and barrier loop detector single-channel or co-channel	•	•
<b>Electrical components</b>		
• voltage transformer (power supply voltage from 110V to 230V)	•	•
• uninterruptable power supply USV	•	
• coins and coin acceptor	•	•
• key switch push-to-lock and key switches with 1 or 2 contacts, each integrated in barrier housing	•	•
• operating panel OPL 02 with relais	•	•
• miscellaneous signal devices	•	•

**Options for RBR reader posts see page 10-11**

**Finish**

- special colour for housing and hood or just for hood

**Electrical components**

- installation preparation on plane surface as rectangular cut-out for components provided by customer

	CPR-C04	CPR-C06	CPR-C07	CPR-C08	CPR-C09
• special colour for housing and hood or just for hood	•	•	•	•	•
• installation preparation on plane surface as rectangular cut-out for components provided by customer	•	•	•	•	•

## RBR Reader Posts

### Basic equipment

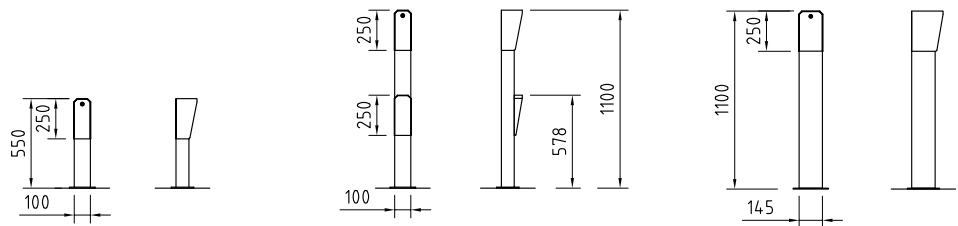
CRP-C04

option

CRP-C06



<b>Application</b>	installation of a photo sensor	installation of two photo sensors	installation of reader or keypad
<b>Construction</b>	description		
material	aluminium		aluminium
width	100		145
length	80		145
height	550	1100	1100
<b>Finish</b>	housing		RAL 9010 (pure white)
	hood		RAL 5003 (saphir blue)
<b>Installation</b>	dowelled on finished floor level FFL		dowelled on finished floor level FFL



All dimensions in mm

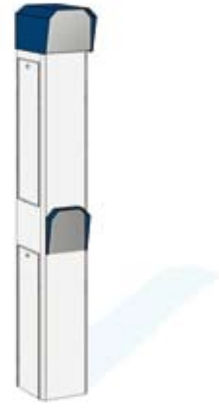
**CRP-C07**



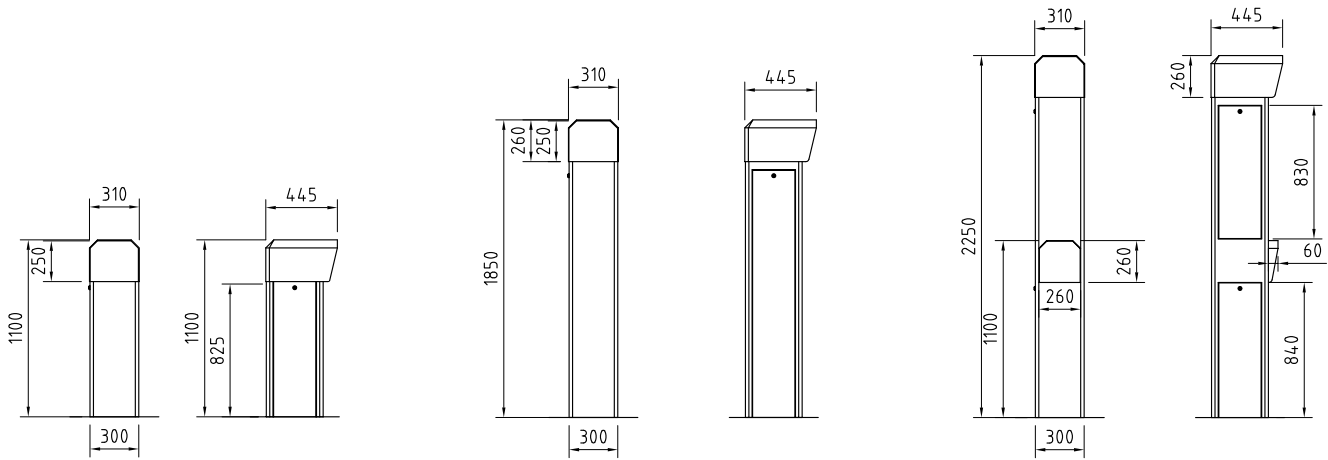
**CRP-C08**



**CRP-C09**



for cars	for vans	for cars and lorries
with door and foldable hood	with door and foldable hood	with two doors and foldable cover
mounting plate 715 x 300 mm	mounting plate 300 x 500 mm	mounting plate 300 x 500 mm
integrated in the housing	integrated in the housing	integrated in the housing
aluminium	aluminium	Aluminium
300	300	300
350	350	350
1100	1850	2250
RAL 9010 (pure white)	RAL 9010 (pure white)	RAL 9010 (pure white)
RAL 5003 (saphir blue)	RAL 5003 (saphir blue)	RAL 5003 (saphir blue)
dowelled on finished floor level FFL	dowelled on finished floor level FFL	dowelled on finished floor level FFL



The logo for KABA, featuring the word "KABA" in a bold, stylized, blue font with a registered trademark symbol (®) to the upper right of the letter "A".

**KABA®**

**Kaba Gallenschütz GmbH**  
Nikolaus-Otto-Strasse 1  
77815 Bühl  
Germany  
Tel. +49 (0) 7223/286-0  
Fax +49 (0) 7223/286-111  
info@kgb.kaba.com

[www.kaba-gallenschuetz.de](http://www.kaba-gallenschuetz.de)