



KABA®

Product facts

Kentaur FTS turnstiles

Automatic access control for perimeter security.

Controlled single-file access in secured areas.

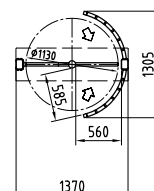
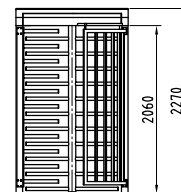
Basic equipment

FTS-E01



Construction	portal width	1370
	total height	2270
	total height with optional roof D1	2390
	optional roof D2	2420
	optional roof D3	2420
	optional roof D4	-
	passage height	2060
	passage width	560
	portal and housing	steel
	lockable maintenance openings	aluminium
rotating unit with tubular column Ø 89 mm	180°, each with 11 straight crossbars Ø 40 mm made of stainless steel glossy AISI 304 with black plastic covering caps	
barrier element	with 11 straight horizontal crossbars Ø 42 mm made of steel	
entry/exit enclosure	with vertical steel bars	
special feature	-	
Finish	rotating unit in stainless steel glossy, steel elements hot-dip galvanized, aluminium elements in RAL 9006 (white aluminium)	
Function	type 0 * type 2 ****	
Electrical components	control system integrated in the unit power supply 110-230 VAC 50/60 Hz standby power consumption 20 VA	
Installation	in sleeve foundation measurement X = 150 mm	
Protection class	housing IP 33, components conducting supply voltage IP 43	

- * type 0 manual motion; mechanically free in one direction/ opposite direction blocked
- ** type 1.1 manual motion; 1 direction electrically controlled/ opposite direction blocked (behaviour in case of power failure: both directions blocked or one direction free, one direction blocked)
- *** type 1.2 manual motion; 2 directions electrically controlled (behaviour in case of power failure: both directions blocked or both directions free)
- **** type 2 power assisted motion; servo-positioning drive/ 2 directions electrically controlled (behaviour in case of power failure can be chosen for each direction: free or blocked)



All dimensions in mm

Option

FTS-E02



FTS-E03



FTS-E02 with option
"turnstile with curved crossbars"

1540	1540
2270	2270
2390	2390
2420	2420
2420	2420
2770	2770
2060	2060
646	550
steel	steel

aluminium	aluminium
-----------	-----------

120°, each with 11 straight crossbars Ø 40 mm made of stainless steel glossy AISI 304 with black plastic covering caps with 11 straight horizontal crossbars Ø 42 mm made of steel	90°, each with 11 straight crossbars Ø 40 mm made of stainless steel glossy AISI 304 with black plastic covering caps with 11 straight horizontal crossbars Ø 42 mm made of steel
--	---

with vertical steel bars	with vertical steel bars
--------------------------	--------------------------

-	-
---	---

rotating unit in stainless steel glossy, steel elements hot-dip galvanized, aluminium elements in RAL 9006 (white aluminium)	rotating unit in stainless steel glossy, steel elements hot-dip galvanized, aluminium elements in RAL 9006 (white aluminium)
--	--

type 0 *	type 0 *
type 1.1 **	type 1.1 **
type 1.2 ***	type 1.2 ***
type 2 ****	type 2 ****

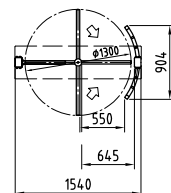
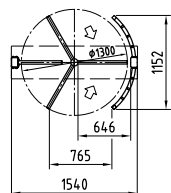
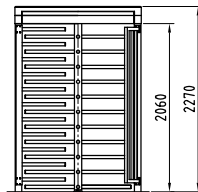
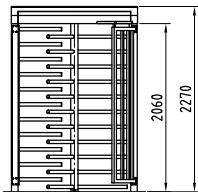
control system integrated in the unit	control system integrated in the unit
---------------------------------------	---------------------------------------

power supply 110-230 VAC 50/60 Hz	power supply 110-230 VAC 50/60 Hz
-----------------------------------	-----------------------------------

standby power consumption 20 VA	standby power consumption 20 VA
---------------------------------	---------------------------------

in sleeve foundation measurement X = 150 mm	in sleeve foundation measurement X = 150 mm
---	---

housing IP 33, components conducting supply voltage IP 43	housing IP 33, components conducting supply voltage IP 43
---	---



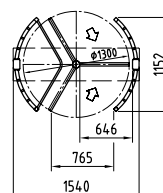
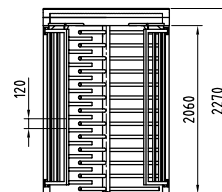
Basic equipment

FTS-E04



Construction	portal width	1540
	total height	2270
	total height with optional roof D1	-
	optional roof D2	-
	optional roof D3	-
	optional roof D4	-
	passage height	2060
	passage width	646
	portal and housing	steel
	lockable maintenance openings	stainless steel AISI 304
rotating unit with tubular column \varnothing 89 mm	120°, each with 13 straight crossbars \varnothing 40 mm made of stainless steel glossy AISI 304 with protection against sawing through and black plastic covering caps	
barrier element	curved with 12 steel bars and protection against sawing through in the vertical bars	
entry/exit enclosure	with vertical steel bars	
special feature	The unit corresponds to resistancy class WK2 according to DIN V ENV 1627 (test report 214 29703, ift Rosenheim)	
Finish	rotating unit in stainless steel glossy, steel elements hot-dip galvanized, maintenance openings stainless steel in RAL 9006 (white aluminium)	
Function	type 1.1 ** type 1.2 *** type 2 ****	
Electrical components	control system integrated in the unit power supply 110-230 VAC 50/60 Hz standby power consumption 20 VA	
Installation	in sleeve foundation measurement X = 150 mm	
Protection class	housing IP 33, components conducting supply voltage IP 43	

- * type 0 manual motion; mechanically free in one direction/ opposite direction blocked
- ** type 1.1 manual motion; 1 direction electrically controlled/ opposite direction blocked (behaviour in case of power failure: both directions blocked or one direction free, one direction blocked)
- *** type 1.2 manual motion; 2 directions electrically controlled (behaviour in case of power failure: both directions blocked or both directions free)
- **** type 2 power assisted motion; servo-positioning drive/ 2 directions electrically controlled (behaviour in case of power failure can be chosen for each direction: free or blocked)



All dimensions in mm

FTS-M02



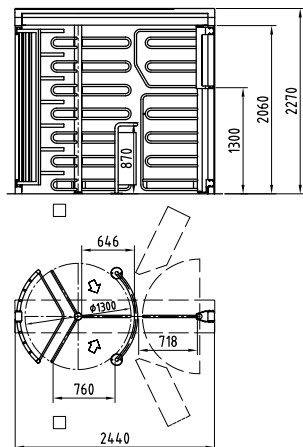
2440
2270
2390
2420
2420
-
2060
646
steel
aluminium
120°, each with 7 curved crossbars Ø 27 mm made of stainless steel glossy AISI 304

curved with 7 horizontal steel bars

half-height, made of stainless steel tubes AISI 304 with plate panels
Automatic bike door with 3 curved crossbars Ø 27 mm and protection plate below. Tube frame, plate and crossbars made of stainless steel glossy AISI 304. Attached barrier element above the bike door with 2 curved crossbars Ø 27 mm and tube frame made of steel.

rotating unit in stainless steel glossy, steel elements hot-dip galvanized, aluminium elements in RAL 9006 (white aluminium)
type 2 ****
automatic bike door with two induction loops and loop detector, two directions electrically controlled

control system integrated in the unit
power supply 110-230 VAC 50/60 Hz
standby power consumption 40 VA
in sleeve foundation measurement X = 150 mm
housing IP 33, components conducting supply voltage IP 43



FTS-M03

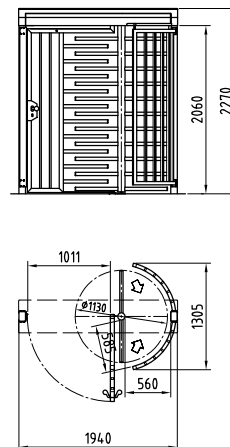


1940
2270
2390
2420
2420
-
2060
560
steel
aluminium
180°, each with 11 straight crossbars Ø 40 mm made of stainless steel glossy AISI 304 with black plastic covering caps

integrated door with 10 straight horizontal steel crossbars Ø 42 mm and all-over frame with steel bars. Equipped with knob on both sides and locking bolt (prepared for customer's profile cylinder) with vertical steel bars
integrated swing door for transit of goods

rotating unit in stainless steel glossy, steel elements hot-dip galvanized, aluminium elements in RAL 9006 (white aluminium)
type 0 *
type 2 ****
type 2: the rotating unit turns automatically 90° in passage direction when the door is opened

control system integrated in the unit
power supply 110-230 VAC 50/60 Hz
standby power consumption 20 VA
in sleeve foundation measurement X = 150 mm
housing IP 33, components conducting supply voltage IP 43



Basic equipment

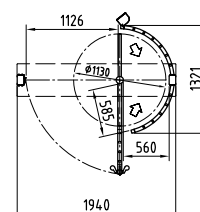
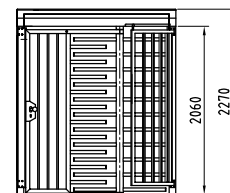
FTS-M05



Construction	portal width	1940
	total height	2270
	total height with optional roof D1	2390
	optional roof D2	2420
	optional roof D3	2420
	optional roof D4	-
	passage height	2060
	passage width	560
	portal and housing	steel
	lockable maintenance openings	aluminium
rotating unit with tubular column \varnothing 89 mm	180°, each with 11 straight crossbars \varnothing 40 mm made of stainless steel glossy AISI 304 with black plastic covering caps	
barrier element	integrated door with 10 straight horizontal steel crossbars \varnothing 42 mm and all-over frame with steel bars. Equipped with knob on both sides and panic lock (prepared for customer's profile cylinder), electric emergency door opener currentless open	
entry/exit enclosure	with vertical steel bars	
special feature	The unit has an emergency exit function	
Finish	rotating unit in stainless steel glossy, steel elements hot-dip galvanized, aluminium elements in RAL 9006 (white aluminium)	
Function	type 2 **** emergency exit function: an „allowance in individual case“ from the highest authority on building supervision is necessary! The rotating unit turns automatically 90° in passage direction when the door is opened.	
Electrical components	control system integrated in the unit power supply 110-230 VAC 50/60 Hz door terminal, including emergency button, key switch and emergency escape way symbol for emergency exit, installed inside at customers wall; meeting ElTVTR requirements standby power consumption 20 VA	
Installation	in sleeve foundation measurement X = 150 mm	
Protection class	housing IP 33, components conducting supply voltage IP 43	

- * type 0 manual motion; mechanically free in one direction/ opposite direction blocked
- ** type 1.1 manual motion; 1 direction electrically controlled/ opposite direction blocked (behaviour in case of power failure: both directions blocked or one direction free, one direction blocked)
- *** type 1.2 manual motion; 2 directions electrically controlled (behaviour in case of power failure: both directions blocked or both directions free)
- **** type 2 power assisted motion; servo-positioning drive/ 2 directions electrically controlled (behaviour in case of power failure can be chosen for each direction: free or blocked)

All dimensions in mm



Optional roofs

	FTS-E01	FTS-E02	FTS-E03	FTS-E04	FTS-M02	FTS-M03	FTS-M05
Roof D1 - depth 1500 or 2270 (total height 120)							
width							
1650	•						
1820		•	•				
2220						•	•
2720					•		
Roof D2 and Roof D3 - depth 2820, 3740 (each with roof edge 200) or 4650 (roof edge 400)							
width							
1830	•						
2000		•	•				
2400						•	•
2900					•		
Roof D4 - depth 2000 (height 500)							
width							
1760		•	•				

Roofing for weather protection and invalid entry prevention

Roof D1

Steel sub-construction hot-dip galvanized, trapezoidal cover plate in RAL 9002 grey white (optional RAL powder coated).
For multiple units we deliver one oversized roof. For four units or more a central water drainage is required.
The distance between units is 50 mm.

Roof D2

Steel sub-construction hot-dip galvanized, trapezoidal cover plate in RAL 9002 grey white (optional RAL powder coated).
With roof edge silver anodized and water drainage in PVC grey.
From depth 3740 on, the unit has to be installed in sleeve foundation and be equipped with reinforced posts.
For multiple units we deliver one oversized roof. The distance between units is 50 mm.
The fascia is continuous. Its length is max. 6,4 m.

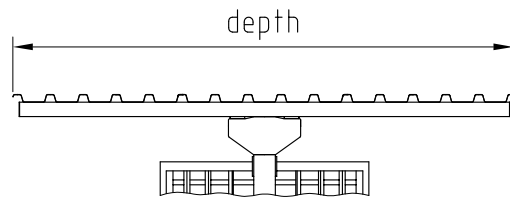
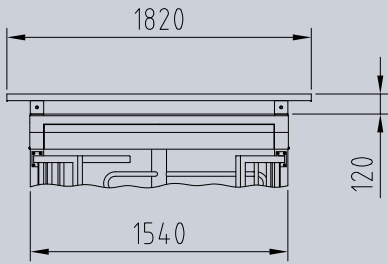
Roof D3

Steel sub-construction hot-dip galvanized, trapezoidal cover plate in RAL 9002 grey white (optional RAL powder coated).
With roof edge silver anodized and water drainage in PVC grey.
Roof underneath aluminium panelling in lotus white.
From depth 3740 on, the unit has to be installed in sleeve foundation and be equipped with reinforced posts.
For multiple units we deliver one oversized roof. The distance between units is 50 mm.
The fascia is continuous. Its length is max. 6,4 m.

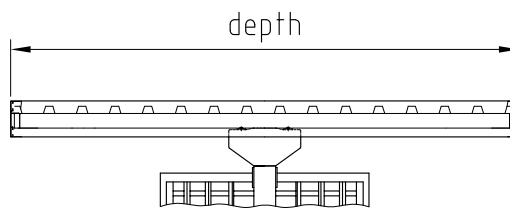
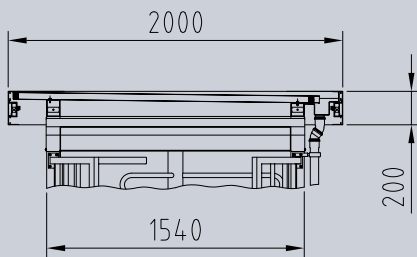
Roof D4

Steel sub-construction hot-dip galvanized, curved plexiglass cover, side mounted gutters in steel plate galvanized and water drainage in PVC grey.
Average snowload 75 kg/m² (higher snowloads on request).
For multiple units a roof is delivered whose number of curved roofs corresponds to the number of units.
The distance between units is 50 mm.

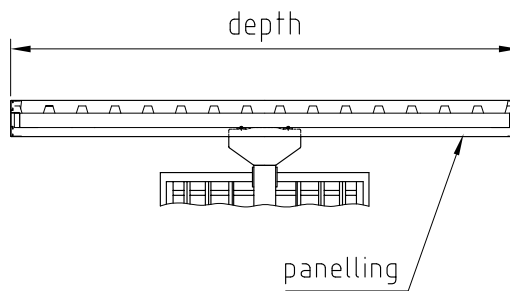
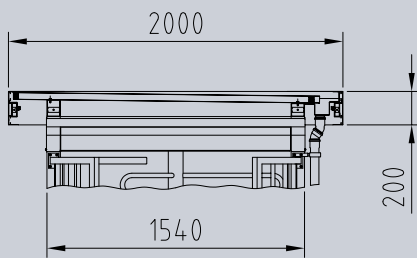
Roof D1 - with trapezoidal cover plate



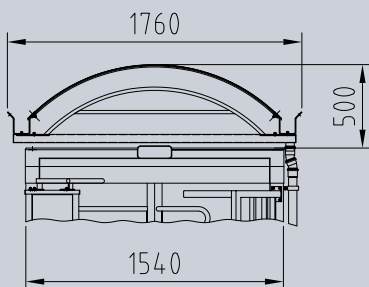
Roof D2 - with trapezoidal cover plate, roof edge profile and water drainage



Roof D3 - with trapezoidal cover plate, roof edge profile, panelling and water drainage



Roof D4 - with plexiglass cover

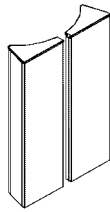


Options (depending on unit type and motor assembly)

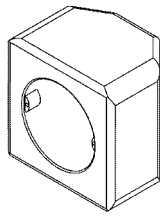
	FTS-E01	FTS-E02	FTS-E03	FTS-E04	FTS-M02	FTS-M03	FTS-M05
Construction							
• housing with lockable front panel in light metal silver anodized, light metal powder coated according to RAL or stainless steel glossy		•					
• roofs D1, D2, D3 and D4. Versions depending on unit type: hot-dip galvanized steel subconstruction and aluminium roof edge 200 or 400 as well as hot-dip galvanized trapezoidal plate, all powder coated according to RAL. The water drainage can be in stainless steel or powder coated in RAL instead of grey.	•	•	•		•	•	•
• curved barrier element hot-dip galvanized or powder coated according to RAL instead of straight crossbars		•	•				
• turnstile with curved crossbars inclusive curved barrier element		•					
• rotating unit with plexiglass bars incl. curved barrier element		•					
• rotating unit in stainless steel AISI 316 or stainless steel AISI 304	•	•	•	•	•	•	•
• for each direction: locking by turning lever with profile half cylinder, installed in maintenance opening	•	•	•		•	•	•
• mechanical lock in stainless steel to stick on crossbar of turnstile column, incl. locking plate	•	•	•			•	
Finish							
• steel and aluminium parts: additional powder coating according to RAL	•	•	•	•	•	•	•
Function							
• door opener currentless open resp. currentless closed						•	
• door opener with slide bar, installed in portal housing or drive type FDC for integrated door						•	•
• 2 pieces of concrete with embedded induction loops instead of loose loops					•		
• counter	•	•	•		•	•	•
• random generator with or without horn	•	•	•	•	•	•	•
Electrical components							
• power supply plug to supply external nodes, 24 VDC/1A	•	•	•	•	•	•	•
• installation preparation on plane surface as rectangular cut-out for components provided by customer	•	•	•			•	•
• installation plate with telescopic rails, in connection with „housing with lockable front panel“		•					
• different consoles completely in stainless steel resp. plastic or aluminium in colour of unit or in RAL 9006/ front panels of aluminium consoles available in plastic or stainless steel	•	•	•			•	•
• coin-acceptor and coins	•	•	•		•	•	•
• release button for manual single release, integrated in plane surface, for protection against vandalism	•	•	•	•	•	•	•
• electric key switch for single or permanent release	•	•	•	•	•	•	•
• operating panels and frame or housing for surface installation	•	•	•	•	•	•	•
• additional boards to expand the existing in-/outputs for motor assembly type 2	•	•	•	•	•	•	•
• various signal devices	•	•	•		•	•	•
• end wiring distributor to connect a maximum of four OPLs	•	•	•	•	•	•	•
• various lightings an twilight switch	•	•	•	•	•	•	•
Installation							
• turnstile can be assembled in the factory for „finished floor“ and „structural floor“ mounting	•	•	•	•			
• mounting on finished floor X = 0	•	•	•	•	•	•	•
• mounting on structural floor X = 150 mm	•	•	•	•	•	•	•

All dimensions in mm

housing with lockable front panel in aluminium silver anodized, with powder coating according to RAL or in stainless steel glossy

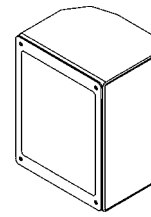


console 1
in plastic in colour of unit or RAL 9006



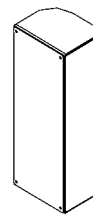
width 94 mm
height 94 mm
depth 65 mm

console 2
in aluminium in colour of unit or in RAL 9006
front panels in PVC grey or aluminium RAL 9006



width 140 mm
height 180 mm
depth 110 mm

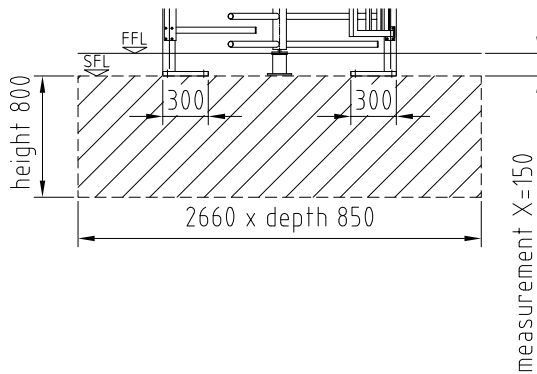
console 3
in aluminium in colour of unit or in RAL 9006
front panels in PVC grey or aluminium RAL 9006



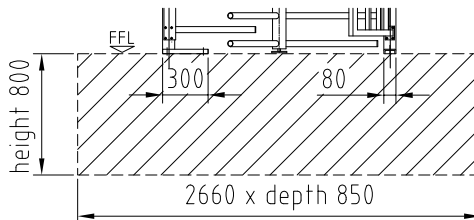
width 140 mm
height 365 mm
depth 110 mm

Installation alternatives, for instance FTS-E02

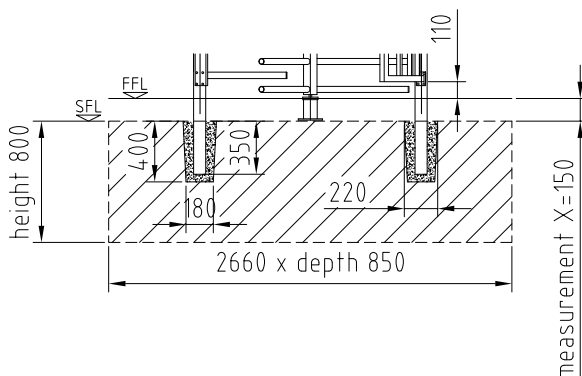
structural floor



finished floor



sleeve foundation



The logo for KABA, featuring the word "KABA" in a bold, stylized, sans-serif font. The letters are dark blue with a white outline, and a registered trademark symbol (®) is located to the upper right of the letter 'A'.

KABA®

Kaba Gallenschütz GmbH
Nikolaus-Otto-Strasse 1
77815 Bühl
Germany
Tel. +49 (0) 7223/286-0
Fax +49 (0) 7223/286-111
info@kgb.kaba.com

www.kaba-gallenschuetz.de