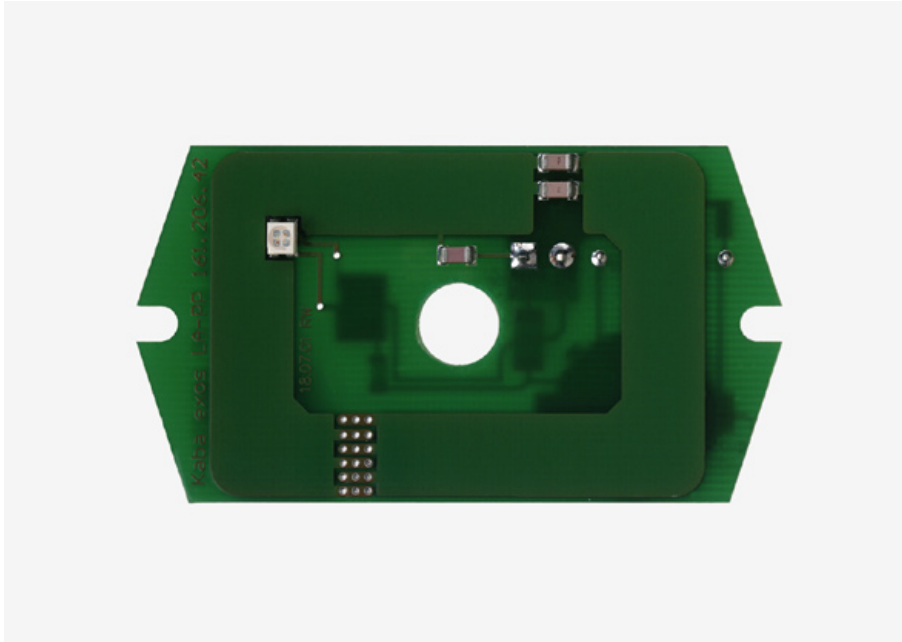


# Kaba exos<sup>®</sup> LA-PP Registration unit



The Kaba exos LA-PP registration unit combined with the Kaba exos DML2 door manager is a fully integrated access control solution with simultaneous convenient user identification. This registration unit is suitable for flush socket mounting, especially in metal environments. Installation is very easy due to the simple cabling.

## RRM concept (Remote Reader Module)

### Free design

The various registration units enable a wide range of designs. All spatial and technical security specifications are taken into account.

### Tampering security

The registration units are installed at remote locations away from the door manager. The door manager can be installed in a tamper-proof room irrespective of the location of the registration units.

### Manipulation security

Communication between the registration units and door manager is encrypted and therefore offers maximum security.

### Product features

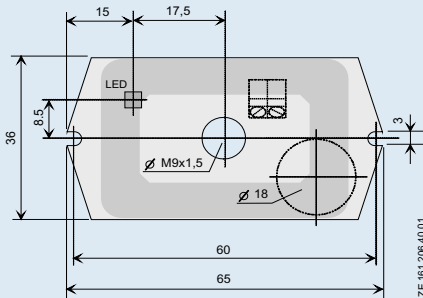
- Flush socket mounting in metal environments
- Freely selectable design (e.g. installation in railing of a turnstile made of metal)
- High level of security due to encrypted communication with the interior door manager
- Maximum protection against vandalism and sabotage

## Application field

The registration unit LA-PP is especially designed for metallic surrounding environment. It fits into the most European standard electric installation boxes (size I).

## Dimensions

65x36x ~17mm (LxWxH)



### Central drill hole

- Screw thread: M9 x 1.5

## Scope of delivery

- Registration unit (including LED and buzzer) with a protection varnishing
- Screw plug-in with thread M9 and drill hole  $\varnothing$  2.4mm (M3). Suitable to mount various European covers

## Suitable housing/covers

- Covers from Feller Edizio (Switzerland) (Article no: 161.270, white; 161.271, light grey; 161.272, anthracite)
- Covers from product line Jung CD 500 (Germany)

## Signaling

- Buzzer for acoustic signaling of the access authorization decision
- The registration unit is equipped with a 2-colour LED (red/green)

## Door manager

### Devices

- Kaba exos DML2 with offline functionality
- Kaba exos LS-110 with offline functionality

### Communication

- Coaxial cable 50 $\Omega$ : RG-178
- LEGIC HF, encrypted
- Acoustic signal transmitter
- Max. length for badges: 25m (recommended < 10m)
- Max. length for Kaba eolegic smart key: 15m (recommended < 10m)

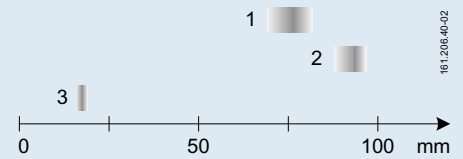
## Ambient conditions

- Operating temperature: -20 $^{\circ}$ ...+ 60 $^{\circ}$ C
- Storage temperature: -40 $^{\circ}$ ...+ 85 $^{\circ}$ C
- Relative humidity: 0%...95%, non-condensing

## Reading distances

The reading functions are guaranteed with all Kaba LEGIC media: Badges, keys (Kaba eolegic smart key), key fobs, watches etc.

The range of the maximum possible reading distances is shown in the following graphic:



- 1=Badges, LEGIC prime Supertag
- 2=Badges, LEGIC ISO 15693
- 3=Kaba eolegic smart key, LEGIC prime

The values are determined under standardized measurement conditions. Detailed information is contained in the product documentation. The reading distances also depend on the installation conditions and the employed media. The writing distances are around five percent shorter than the reading distances.

## Standards and Approvals

The registration unit Kaba exos LA-PP is CE approved and complies with the following standards:

- EN 300330
- ETS 300683



Kaba<sup>®</sup> and Kaba exos<sup>®</sup> are registered trademarks of Kaba AG. LEGIC<sup>®</sup> is a registered trademark of Legic Identysystems.