

Kaba c-lever compact

Kaba c-lever compact door furniture

The **c-lever** compact is an electronic door reader with integrated clutch, by which the lock can be opened manually after identification by an authorised medium.

The access authorisation is indicated optically and acoustically.

The door furniture is equipped according to type with a reader antenna above the handle on the exterior or the exterior and interior of the door.

Area of use

The door furniture is independent of the lock and cylinder and can largely be mounted to any door made of wood, glass or metal with round or Europrofile cutout.

A mechanical emergency release is possible with a mechanical locking cylinder (corresponding to the lock function).

The door furniture is suitable for installation in EN 1634 fire doors and under certain conditions (dependent on lock type) can be fitted to emergency exit doors with door handles or push pad, in accordance with EN 179.

Type 2724, 2725

Door furniture type 272... with reader antenna on the exterior of the door. Type 2724 may only be used with a guaranteeing tensile strength and turnable handle on the inner handle.

Type 2729

Door furniture type 2729 with reader antenna on exterior of the door.

LEGIC or MIFARE Technology

Technical specifications

Dimensions (W x H x D)	
Door furnitures, narrow	108.5 x 60 x 25.8 mm
Minimum backset	45 mm, depending on the door and lock
Power supply	
Batteries	2 x 1.5V, FR03/AAA Lithium
Operating conditions / service life	
Protection class	External: IP54 Internal: IP40
Temperature	- 25 ... + 70 °C
Humidity	0 ... 95% rH, non-condensing
Climate	Not suitable for corrosive atmospheres (chlorine, ammonia)
Battery life at 20 °C	around 90,000 cycles ¹⁾
Identification technologies (RFID)	
MIFARE	DESFire classic
LEGIC	advant prime
Frequency	13.56 MHz
Certificate type 2725, 2729	
Fire doors	EN 1634-1
Fire door handle sets	EN DIN 18273
Certificate type 2725	
Emergency exits with push pads	EN 179 (with special locks)

Key:

¹⁾ Dependent on configuration and technology

Versions

Material	
Door furniture	Stainless steel
Antenna cover	Plastic, black or white
Light unit	Plastic, red/green illuminating
Handle	In various versions (see order options)

Recommended accessories

Product number	
1374	Kaba evolo manager software
1460	Kaba programmer
1355-42	Programming cable
1355-42A	Programming adapter

Kaba c-lever compact

2725MID, 2725LEA Kaba c-lever compact

Door furniture with reader antenna on outside of door.
The mechanical door handle engages firmly internally with the cam.

Versions

2725MID Kaba c-lever compact, MIFARE

2725LEA Kaba c-lever compact, LEGIC

Material/Version

- Stainless steel furniture
- Antenna cover plastic, with illumination unit red/green

Scope of supply

- 1 c-lever compact door furniture, external door furniture
 - 1 spindle
 - 1 connecting and fastening material
 - 2 batteries
 - Inside door handle
 - 1 quick guide
 - 1 mounting key
-

Order options

• Line (LINE):

- E300

• Door thickness (TS):

- 50: 38 - 50 mm
- 61: 50 - 61 mm
- 72: 61 - 72 mm
- 83: 72 - 83 mm
- 94: 83 - 94 mm

• Handle type (DA):

- HA: E138F (EN 179)
- HD: E150F
- HL: E1400F
- HN: E1401F (EN 179)

• Spindle (DO):

- 7: Square 7 mm
- 8: Square 8 mm
- A: Square 8.5 mm (for Austria)
- 9: Square 9 mm

• Rosette design (R)

- R: Round
- C: Angled

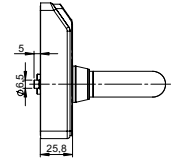
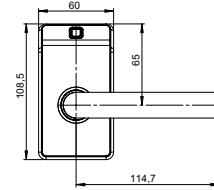
• Cover colour (F):

- B: black
 - W: white
-

Order description

Product No./LINE/TS/DA/DO/F

e.g. 2725MID/E300/50/HA/9/B



2725...

Kaba c-lever compact

2724MID, 2724LEA Kaba c-lever compact half

Door furniture with reader antenna on outside of door.

Versions

2724MID Kaba c-lever compact half, MIFARE

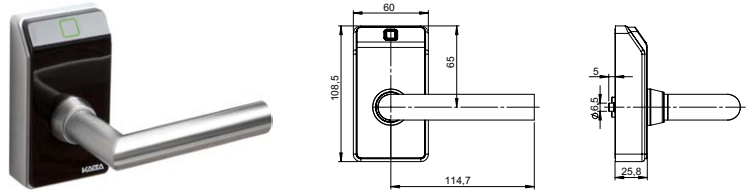
2724LEA Kaba c-lever compact half, LEGIC

Material/Version

- Stainless steel furniture
- Antenna cover plastic, with illumination unit red/green

Scope of supply

- 1 c-lever compact door furniture half, external door furniture
- 1 spindle
- 1 connecting and fastening material
- 2 batteries
- 1 quick guide
- 1 mounting key



2724...

Order options

• Line (LINE):

- E300

• Door thickness (TS):

- 50: 38 - 50 mm
- 61: 50 - 61 mm
- 72: 61 - 72 mm
- 83: 72 - 83 mm
- 94: 83 - 94 mm

• Handle type (DA):

- HA: E138F (EN 179)
- HD: E150F
- HL: E1400F
- HN: E1401F (EN 179)

• Spindle (DO):

- 7: Square 7 mm
- 8: Square 8 mm
- A: Square 8.5 mm (for Austria)
- 9: Square 9 mm

• Cover colour (F):

- B: black
- W: white

Order description

Product No./LINE/TS/DA/DO/F

e.g. 2724MID/E300/50/HA/9/B

Kaba c-lever compact

2729MID, 2729LEA Kaba c-lever compact dual

Door furniture with reader antenna on inside and outside of door. The clutch and electronics are integrated in the door furniture.

Versions

2729MID Kaba c-lever compact, dual, MIFARE

2729LEA Kaba c-lever compact, dual, LEGIC

Material/Version

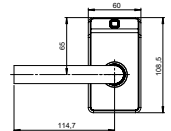
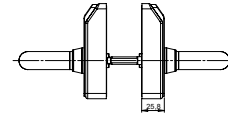
- Stainless steel furniture
- Antenna cover plastic, with illumination unit red/green

Scope of supply

- 2 c-lever compact door furniture, outside and inside door furniture
- 1 spindle
- 1 connecting and fastening material
- 4 batteries
- 1 quick guide
- 1 mounting key



2729...



Order options

• Line (LINE):

- E300

• Door thickness (TS):

- 50: 38 - 50 mm
- 61: 50 - 61 mm
- 72: 61 - 72 mm
- 83: 72 - 83 mm
- 94: 83 - 94 mm

• Handle type (DA):

- HA: E138F (EN 179)
- HD: E150F
- HL: E1400F
- HN: E1401F (EN 179)

• Spindle (DO):

- 7: Square 7 mm
- 8: Square 8 mm
- A: Square 8.5 mm (for Austria)
- 9: Square 9 mm

• Cover colour (F):

- B: black
- W: white

Order description

Product No./LINE/TS/DA/DO/F

e.g. 2729MID/E300/50/HA/9/B

Electronic door furniture

Kaba c-lever compact

2725MID	Kaba c-lever compact	MIFARE
2725LEA	Kaba c-lever compact	LEGIC
2724MID	Kaba c-lever compact half	MIFARE
2724LEA	Kaba c-lever compact half	LEGIC
2729MID	Kaba c-lever compact dual	MIFARE
2729LEA	Kaba c-lever compact dual	LEGIC